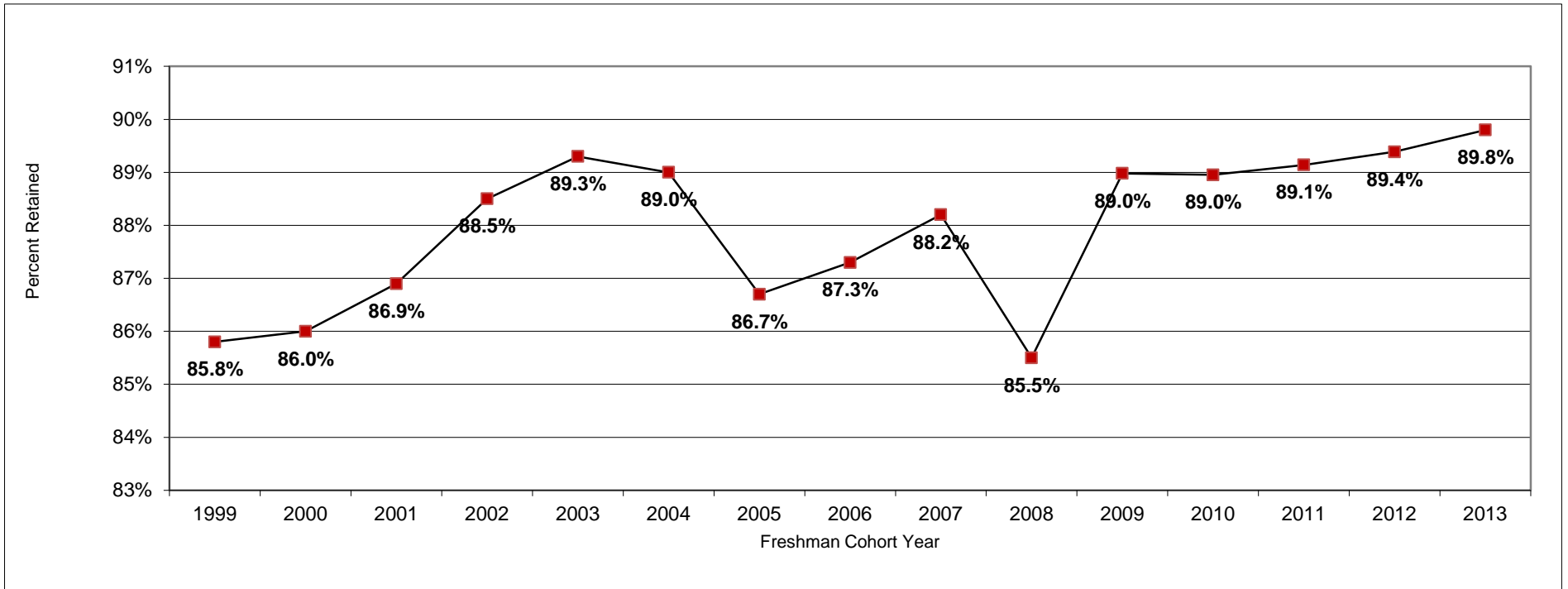


## Retention Rate Trends

### Undergraduate Full Time Freshman Cohort

#### Freshmen to Sophomore Retention Trends

| Academic Year   | 2000-01 | 2001-02 | 2002-03 | 2003-04 | 2004-05 | 2005-06 | 2006-07 | 2007-08 | 2008-09 | 2009-10 | 2010-11 | 2011-12 | 2012-13 | 2013-14 | 2014-15 |
|-----------------|---------|---------|---------|---------|---------|---------|---------|---------|---------|---------|---------|---------|---------|---------|---------|
| Freshman Cohort | 1999    | 2000    | 2001    | 2002    | 2003    | 2004    | 2005    | 2006    | 2007    | 2008    | 2009    | 2010    | 2011    | 2012    | 2013    |
| % Retained      | 85.8%   | 86.0%   | 86.9%   | 88.5%   | 89.3%   | 89.0%   | 86.7%   | 87.3%   | 88.2%   | 85.5%   | 89.0%   | 89.0%   | 89.1%   | 89.4%   | 89.8%   |



Data Source: Student Records  
 Data Compiled by Institutional Research