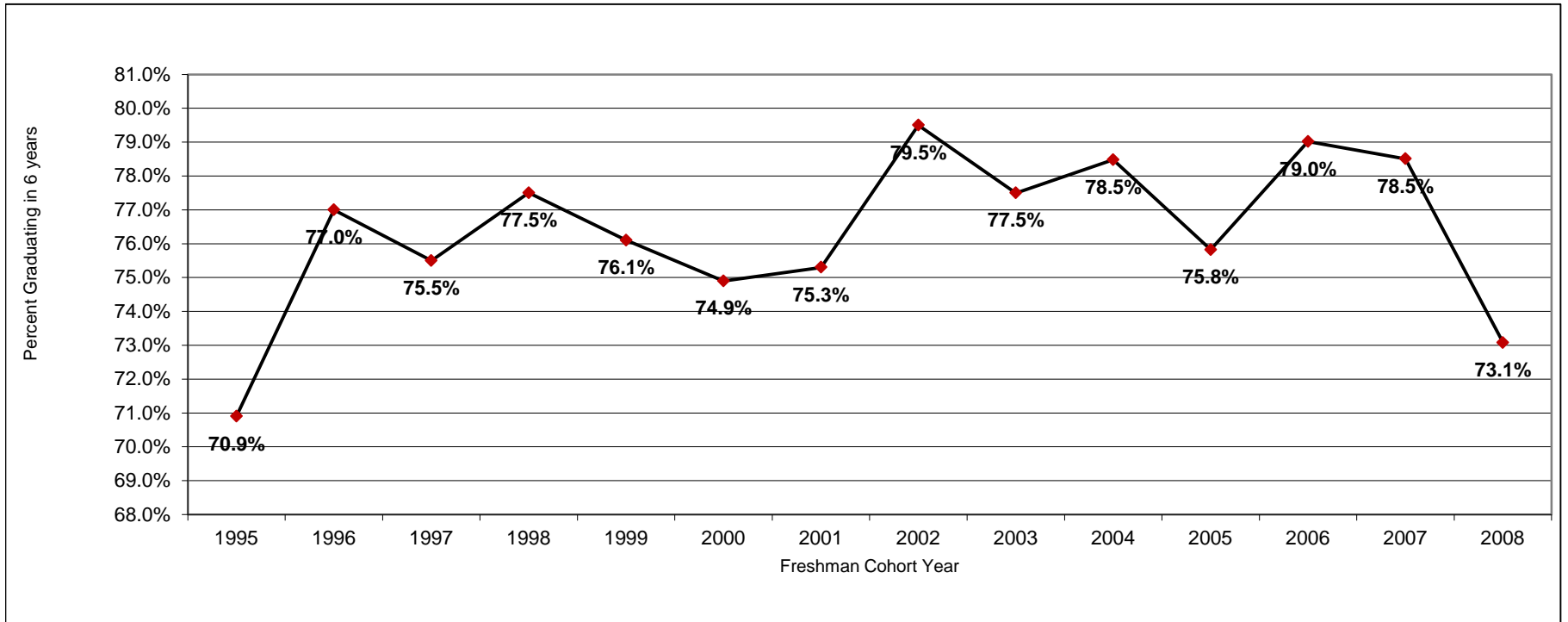


Six Year Graduation Rate Trends Undergraduate Full Time Freshmen Cohorts

Academic Year	2000-01	2001-02	2002-03	2003-04	2004-05	2005-06	2006-07	2007-08	2008-09	2009-10	2010-11	2011-12	2012-13	2013-14
Freshman Cohort - Fall Semester	1995	1996	1997	1998	1999	2000	2001	2002	2003	2004	2005	2006	2007	2008
% Graduating	70.9%	77.0%	75.5%	77.5%	76.1%	74.9%	75.3%	79.5%	77.5%	78.5%	75.8%	79.0%	78.5%	73.1%



Data Source: Student Records
Data Compiled by Institutional Research